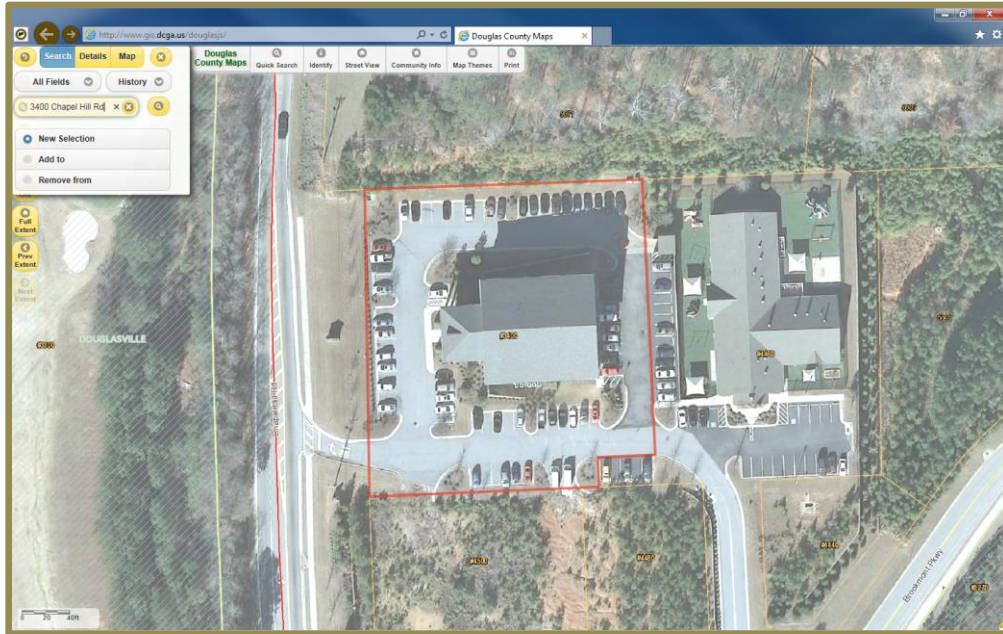


INSTRUCTIONS ON HOW TO VERIFY THE APPROPRIATE TAX DISTRICT TO APPLY FOR YOUR OCCUPATIONAL TAX/BUSINESS LICENSE

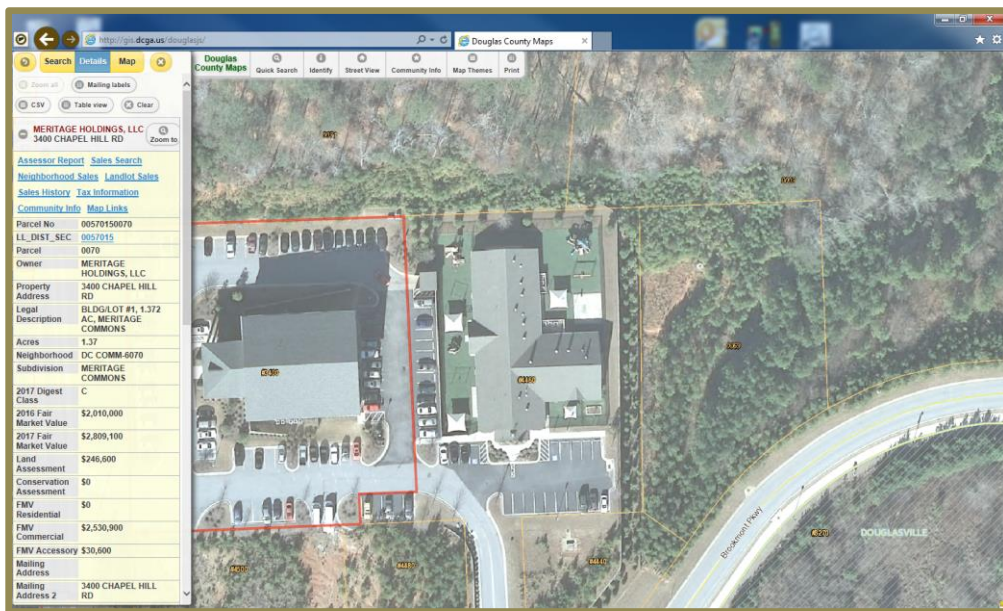
To verify what Occupational Tax/Business License District you are located in, please click on the link below:

[Douglas County Property Information Website](http://www.dcgas.us/douglas/)

In the search field, enter your address



Click the Details tab



Scroll down until you see the Tax District indicator. If this displays County as below, then you will apply for a business license with Douglas County.

Note: If you see anything other than County, such as City of Douglasville, you will apply with the City of Douglasville, etc.

